

LS7 SOFTWARE UPGRADE release 3.08

To upgrade to release 3.08 you need to have the following:

- Software release 3.00-3.01 or 3.02 already installed on your LS7
- If you have previous release , you need to upgrade also firmware of the LS7 by changing resistor R22 (see appendix 1 to this manual)
- download some files from website www.errebispa.com or from any Usb flash memory, CD, Hard disk etc...

If you are using Windows Vista or Windows 7 you need to download the following framework: .NET framework 3.5 from Microsoft

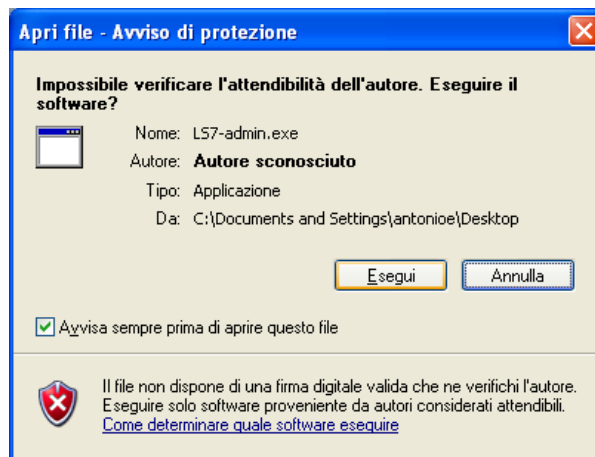
1. HOW TO INSTALL PC SOFTWARE (LS7.exe)

You need to download **software last release**.

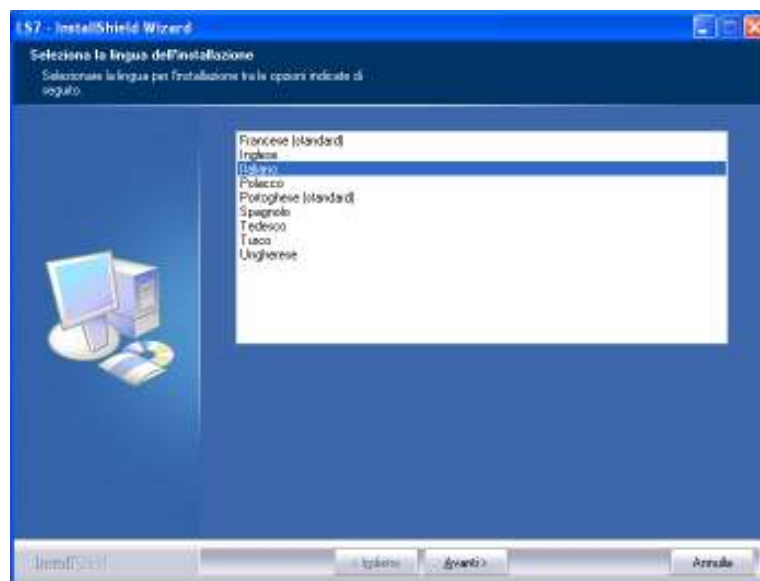


To install it just double click on the icon

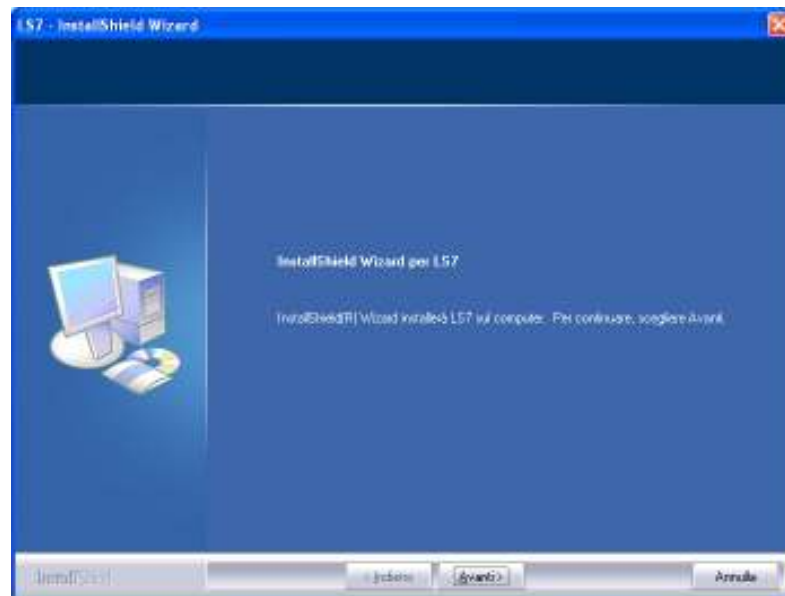
The software will install automatically, you need only to follows next steps:



Select ESEGUI.



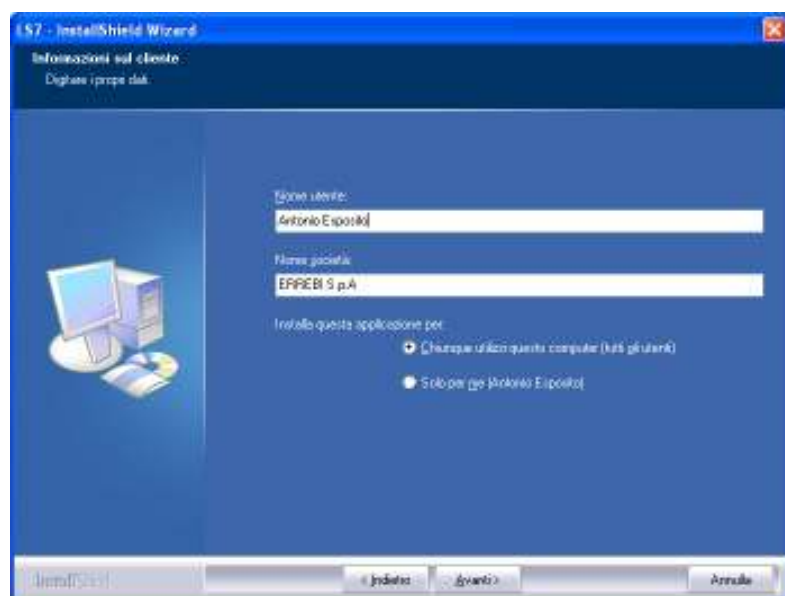
Choose language and click AVANTI.



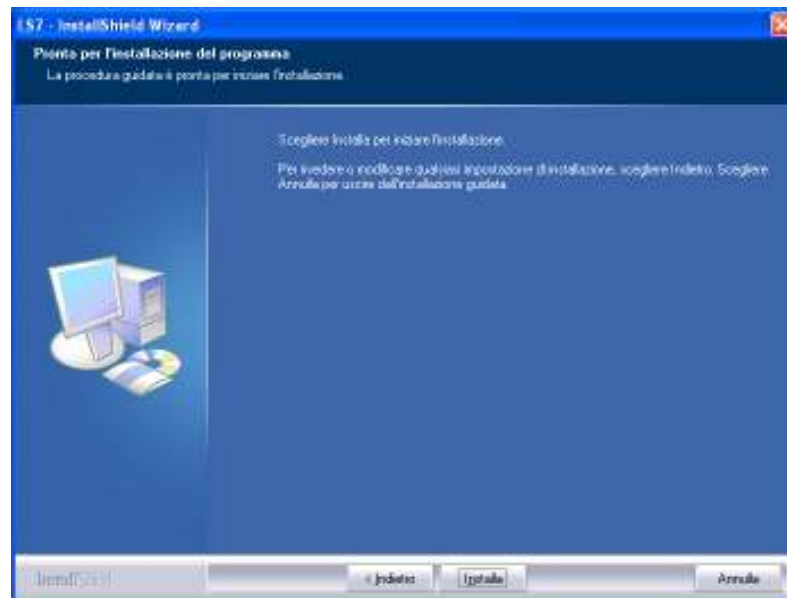
Select AVANTI.



Choose “Accetto i limiti del contratto di licenza” and select AVANTI



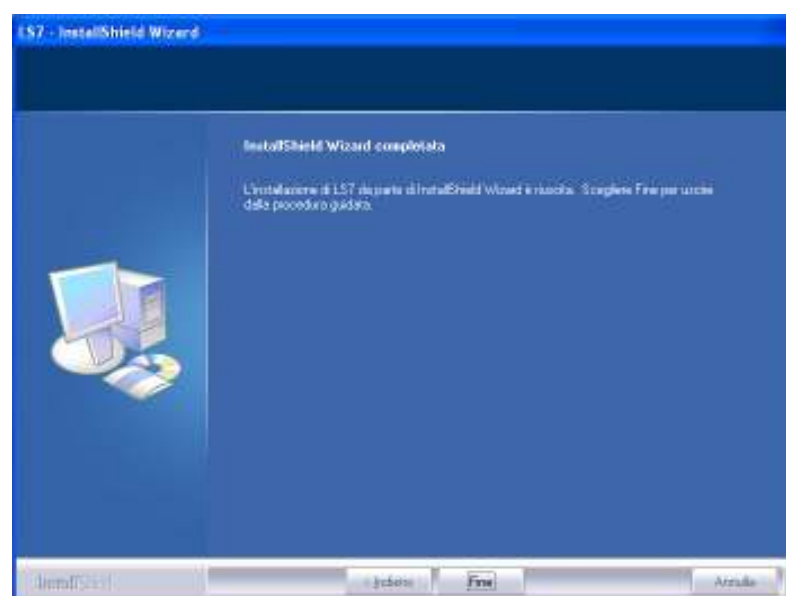
Fill user name and click preferred option. Click AVANTI



Select INSTALLA.



Select CONTINUA.



Select FINE. Now the installation of PC software is complete.

2. LS7 SOFTWARE UPGRADE release 3.08

Switch on Ls7 and connect it to PC by USB cable, as in the picture.

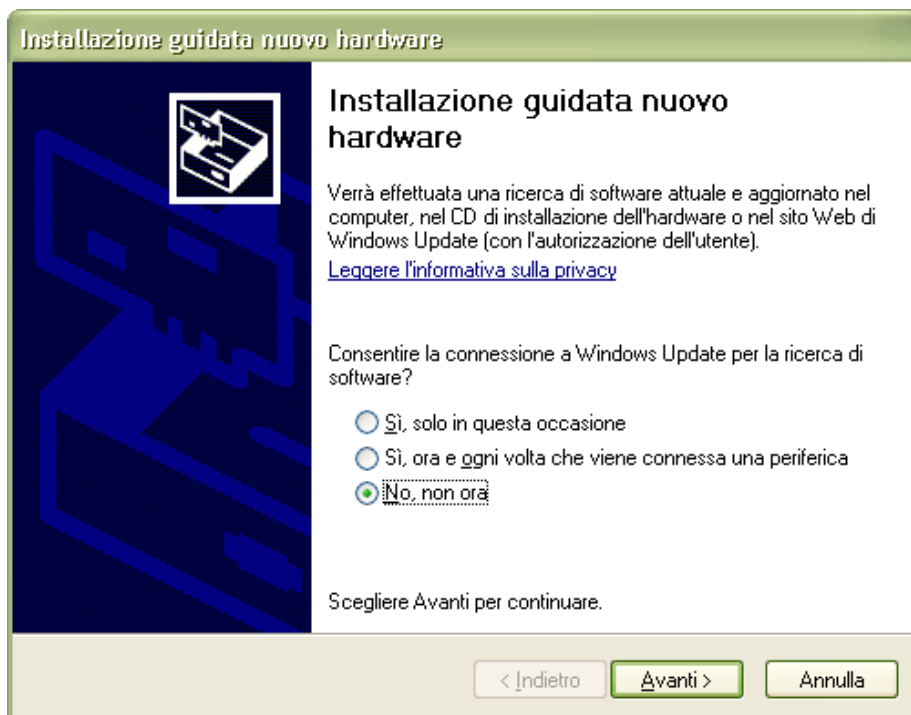


To upgrade the LS7 device it is necessary that TX4-Tech and TPX-cloner are disconnected from LS7

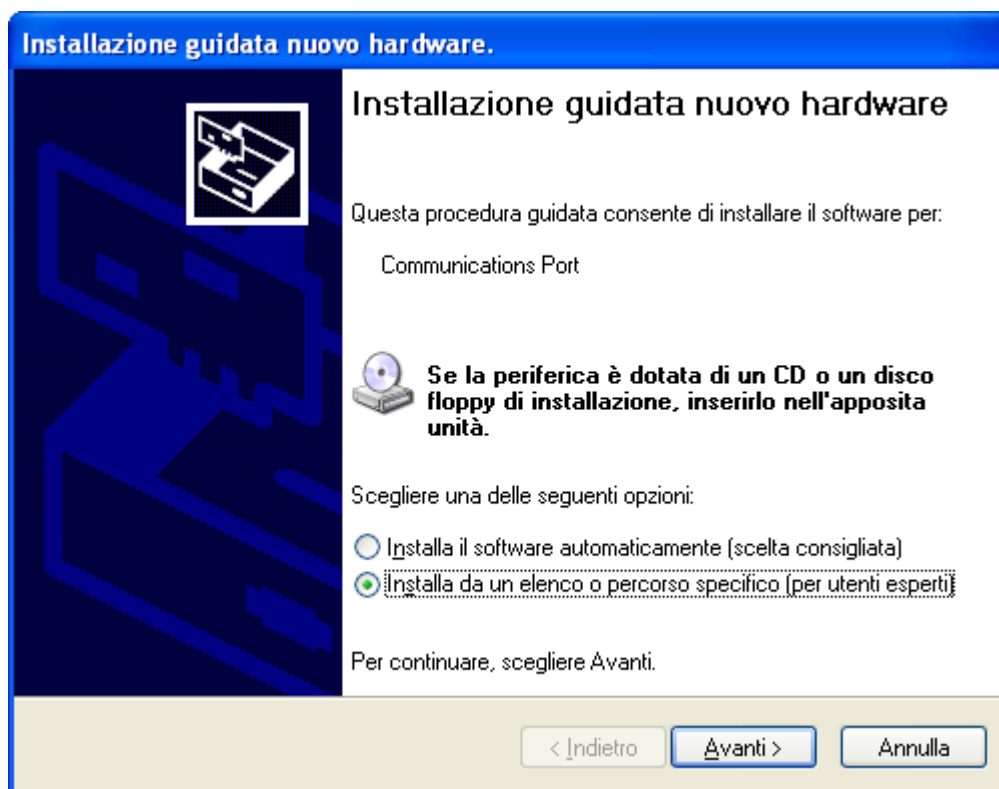
(If it is the first USB connection between LS7 and PC, you need to follow all next steps. If you have already connected LS7 to PC via USB port, please proceed from step 3.2.).

Once you have connected the cable, wait until Windows recognize automatically the new USB device; on the right side corner of the screen an icon will appear; double click on it to open the drivers installation software.

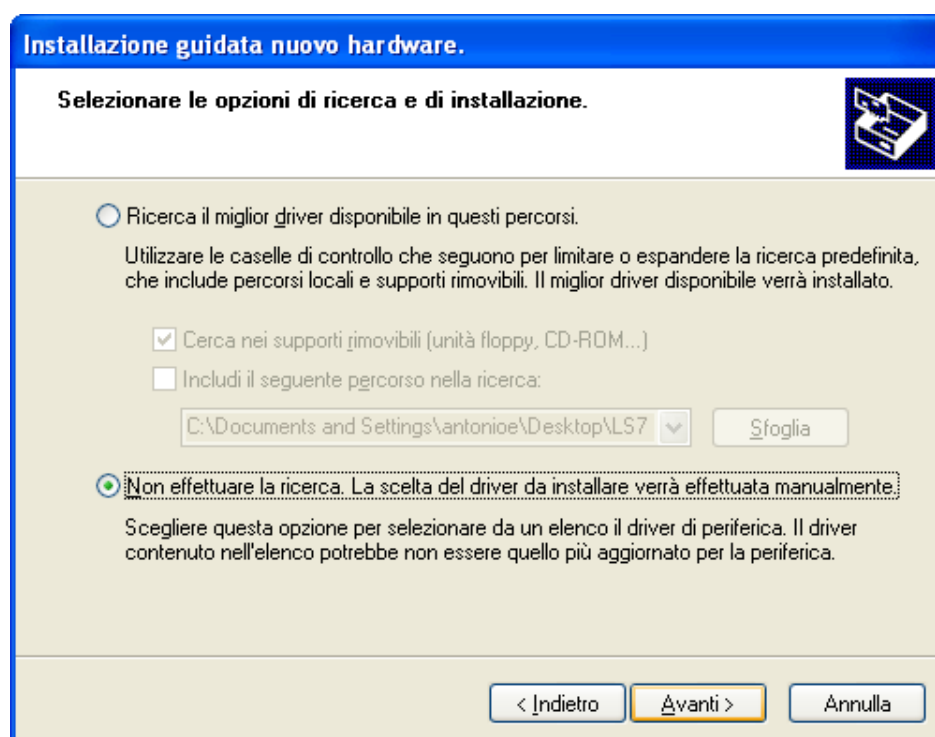
On first step select the option “**No, NON ORA**” e **AVANTI**



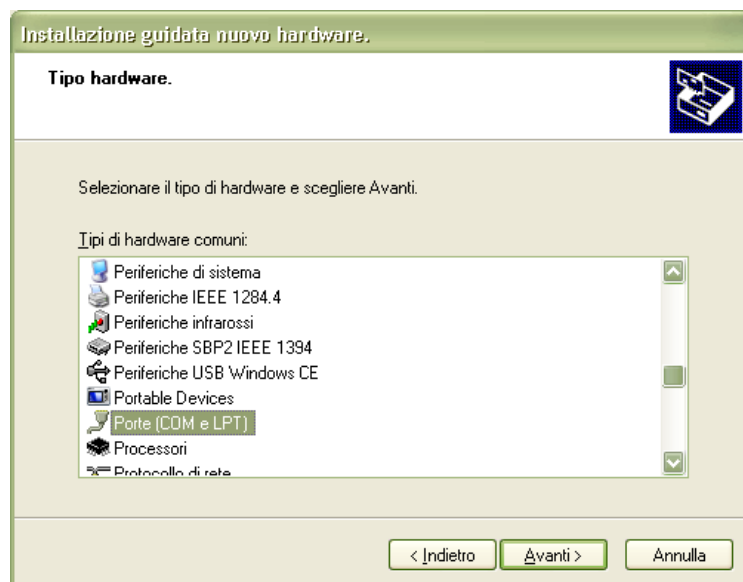
Proceed by selecting “**Installa da un elenco o percorso specifico**” and click **AVANTI>**



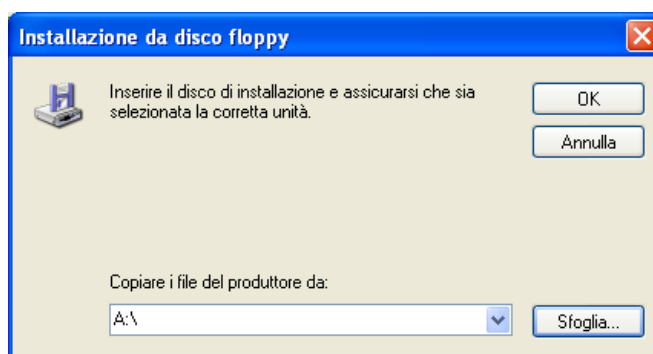
Select the option “**Non effettuare la ricerca. La scelta...**” and then proceed by clicking **AVANTI>**



Select the hardware driver to install “**PORTE (COM E LPT) ”**. Click **AVANTI>**

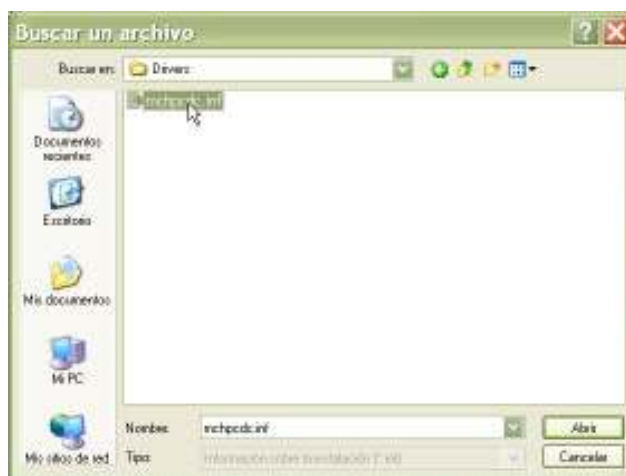


- Select the folder from where to download the file:

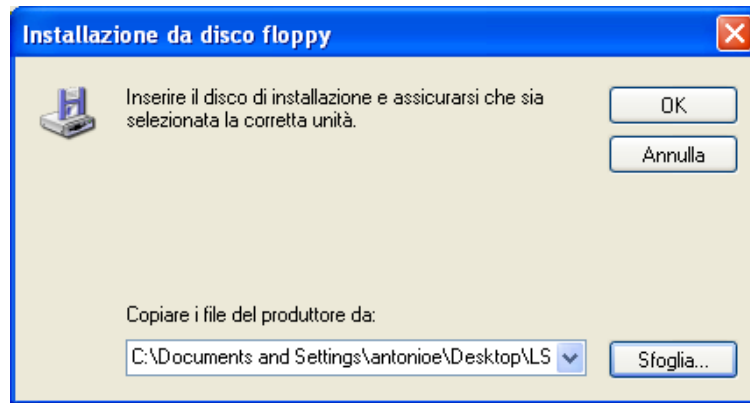


Proceed by selecting file **mchpcdc.inf** from:
(C:\Programmi\ERREBIL\LS7\LS7 Usb Drivers)

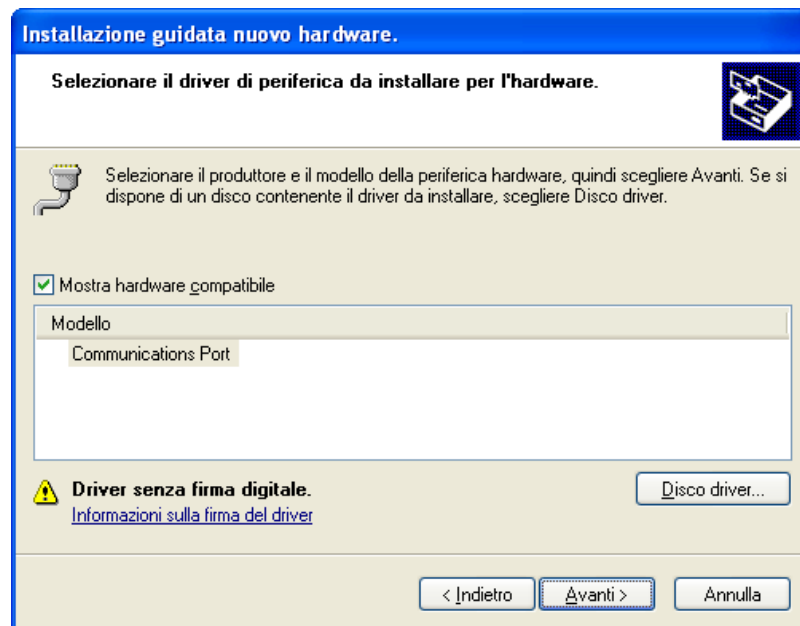
Select **APRIRE>**



- Click **OK**:



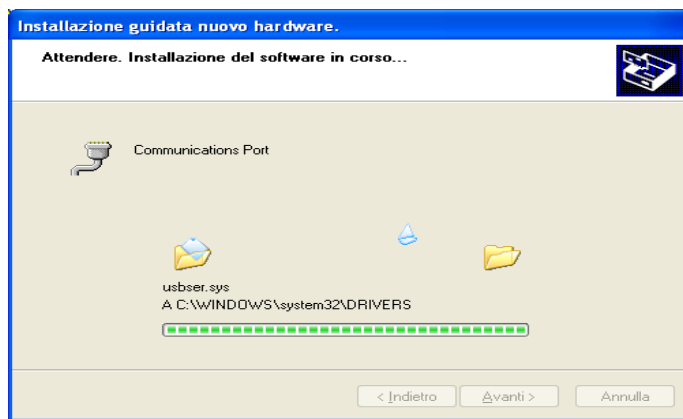
- If Wizard hardware appears again click **AVANTI>**



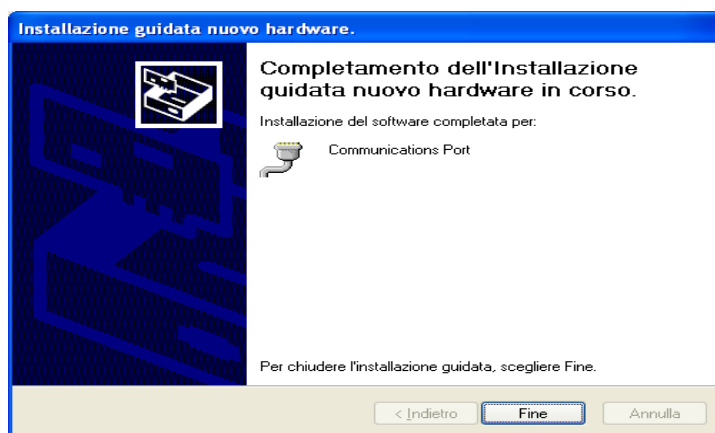
- Proceed by clicking **CONTINUA**:




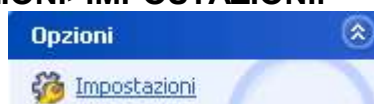
- Please wait until automatic installation is completed.



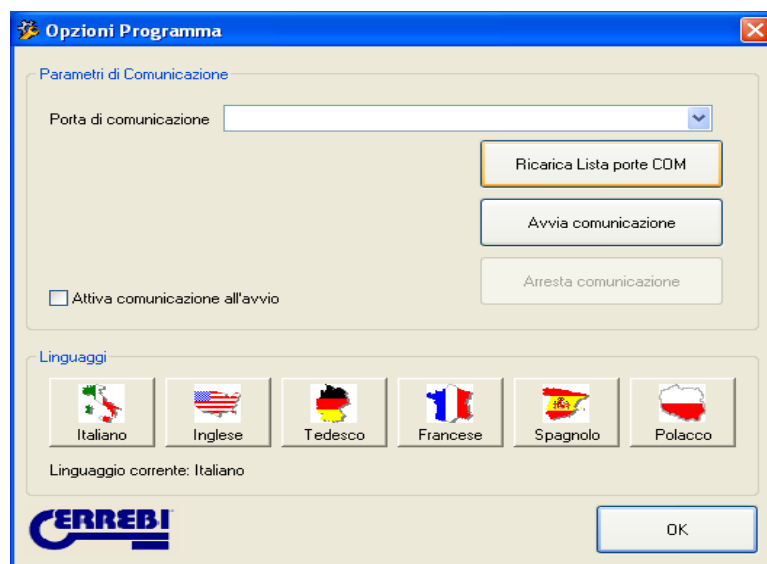
- At the end of the process click **FINE**.

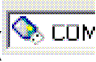


- 3.2 Open Ls7 software  on your desktop .
Then,click on menu **OPZIONI>IMPOSTAZIONI**.



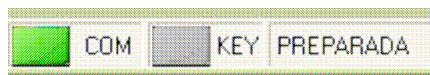
Look for available com port by clicking on **RICARICA PORTE COM**.



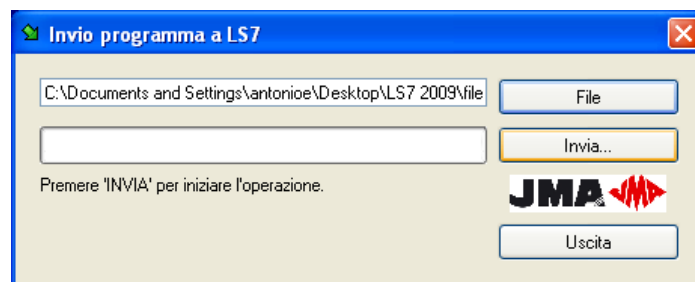
Select the new Usb port available; you can recognize it from symbol ().
Port number is different from PC to PC.

Be carefull that option “ATTIVA COMMUNICATION WHEN START” is deselected.

- 3.1 Start communication by clicking **AVVIA COMUNICAZIONE**.
To check that this passage has been well done, check that led in bottom left corner is green



- 3.2 To complete the upgrade you need to select from menu **OPZIONI > INVIO PROGRAMMA**. “Invio programma a LS7” will appear. Now click on **FILE** and select **Trs5307.bin** previously downloaded on your PC



Click **INVIA...** the machine will complete automatically the upgrade.
When the process will be completed on LS7 the message “Invio programma Ok” will appears.

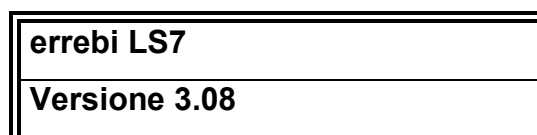
4. LANGUAGE UPGRADE (..._new_v3_07.txt)

Now you need to proceed with the upgrade the LS7 language.
By clicking in menu **OPZIONI > LINGUAGGI** the message “**INVIO LINGUAGGIO A LS7**” will appear.
Select the file **.txt** downloaded on your Pc.

(es: ENG_new_v3_07.txt or preferred language....FRA, ESP...)

Proceed with enter. LS7 will complete the transfer automatically.
Now your LS7 is upgraded.

5. To check that the process has been succesfully completed you need to re-start the LS7 and check softwarte release on display.



5. TX4-TECH DRIVERS INSTALLATION

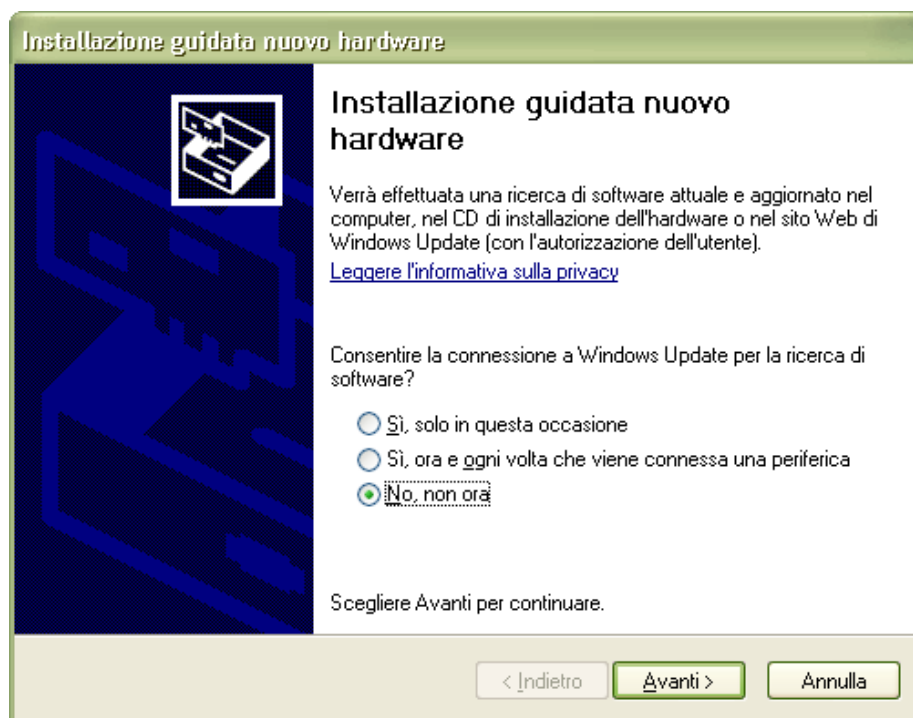
To upgrade Tx4-TECH you need to click from menu **Opzioni>Impostazioni>>>> Arresta comunicazione** before to disconnect the USB cable connecting LS7 to PC

Then it is necessary to **SWITCH OFF LS7** or to disconnect serial cable that connect LS7 to TX4-TECH.

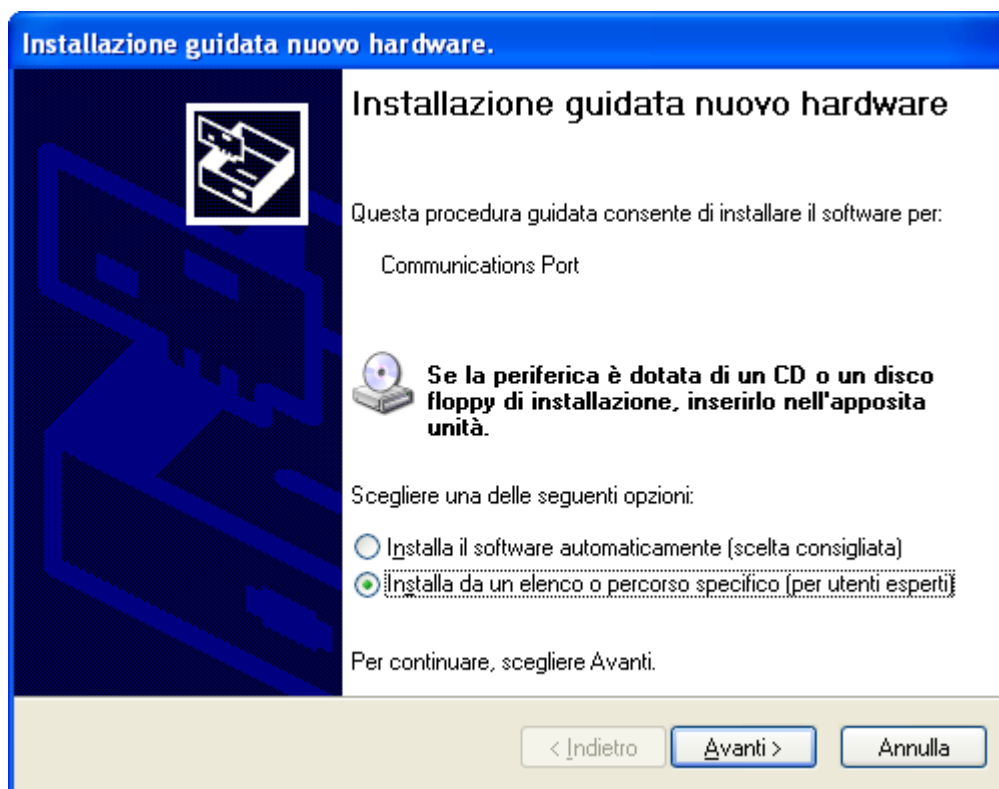
Once you have connected the cable, wait until Windows recognize automatically the new USB device; on the right side corner of the screen an icon will appear; double click on it to open the drivers installation software.

(If it is the first USB connection between TX4-TECH and PC, you need to follow all next steps. If you have already connected TX4-TECH to PC via USB port, please proceed from step 5.2)

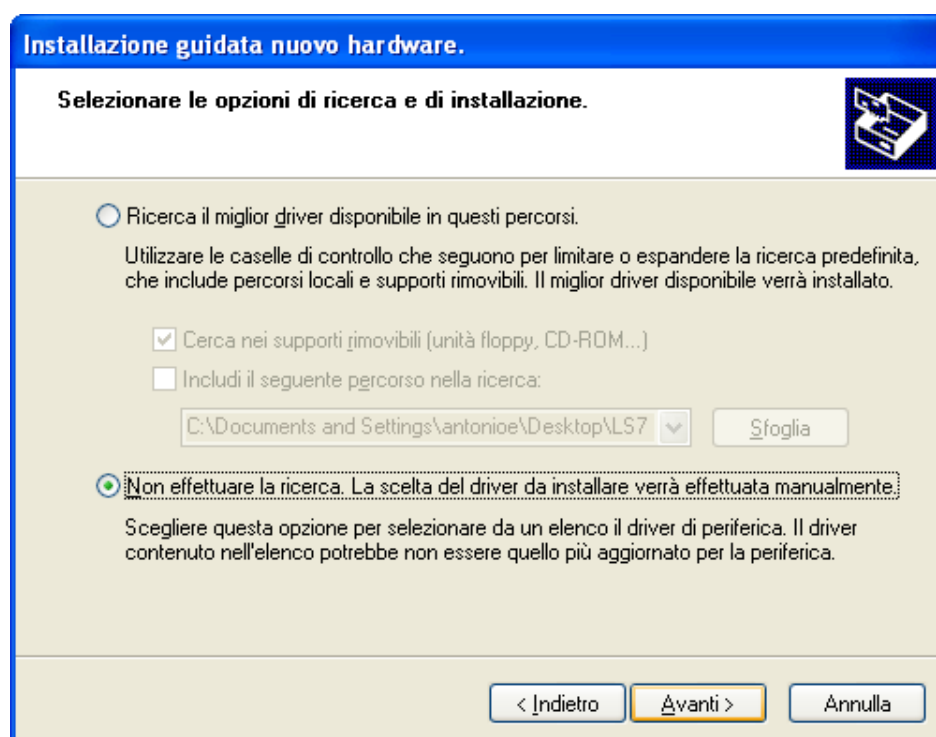
During first step select the options **“No, NON ORA”** e **AVANTI**



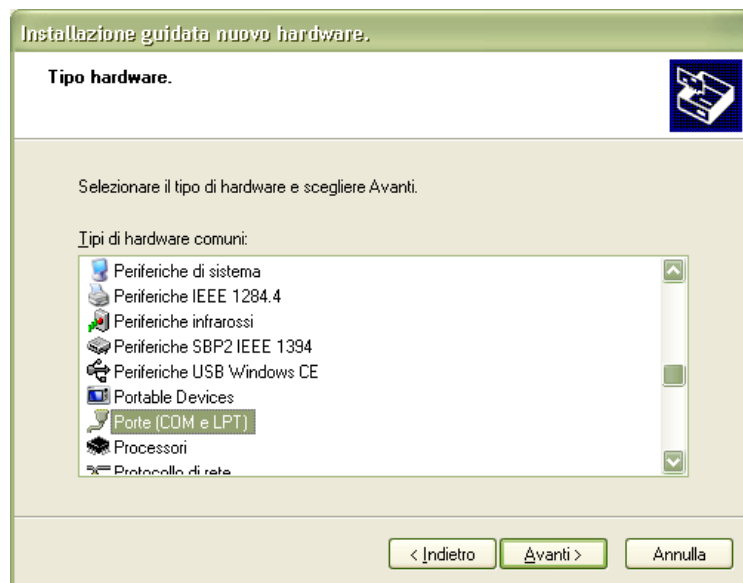
Procede by selecting **“Installa da un elenco o percorso specifico”** and click **AVANTI>**



Then select the option “**Non effettuare la ricerca. La scelta...**” and proceed by clicking **AVANTI>**



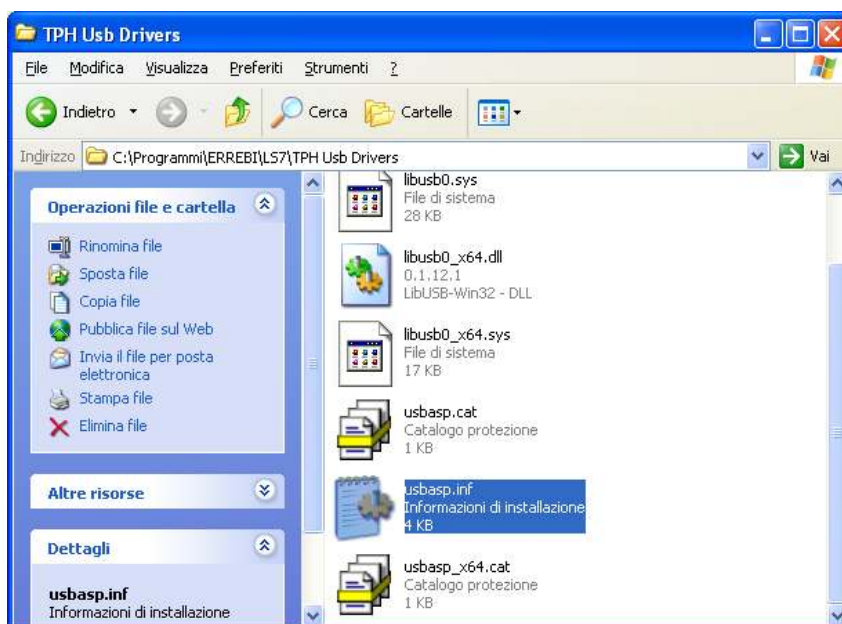
Select the driver you need to install, in this case “PORTE (COM E LPT) ”.
Click **AVANTI>**



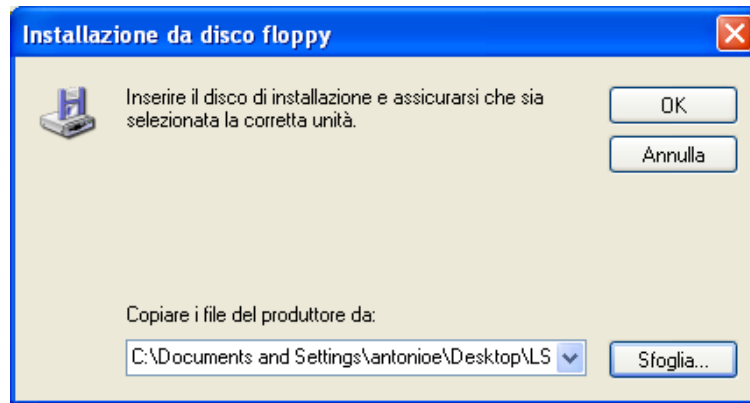
- At this step you need to choose folder from where you get the driver:



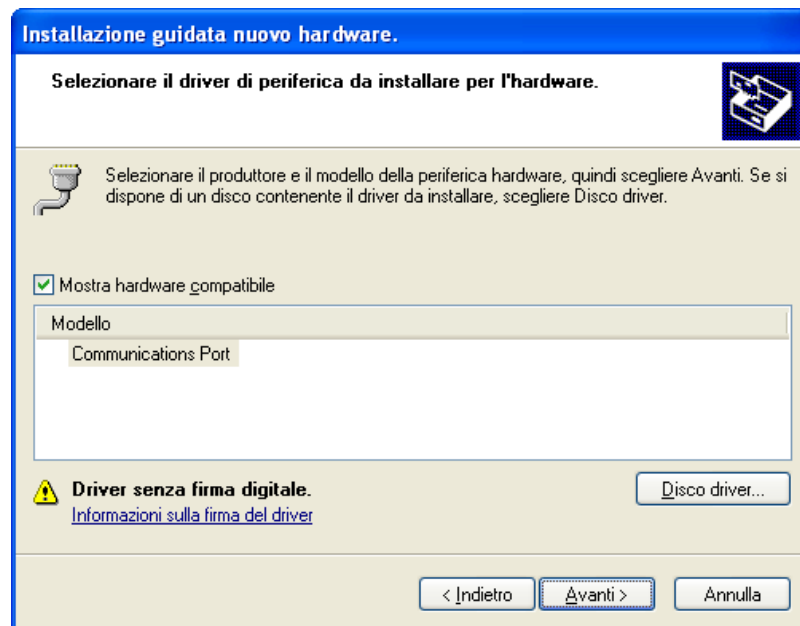
Select file **usbasp.inf** from his position.
(C:\Programmi\ERREBIL57\TPH Usb Drivers)
Procede by clicking **APRIRE>**



- Click **OK**:



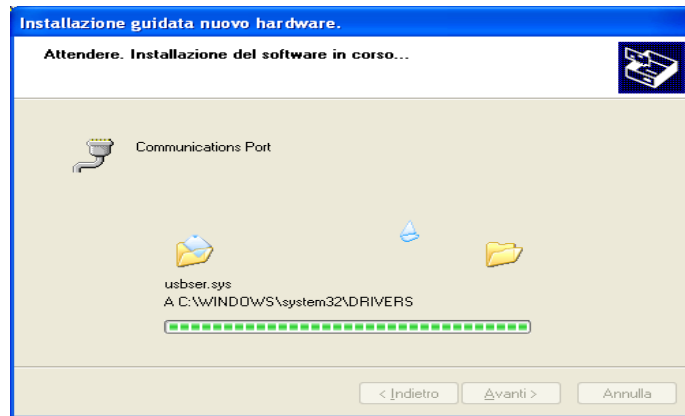
- If Wizard hardware appears again, click **AVANTI>**



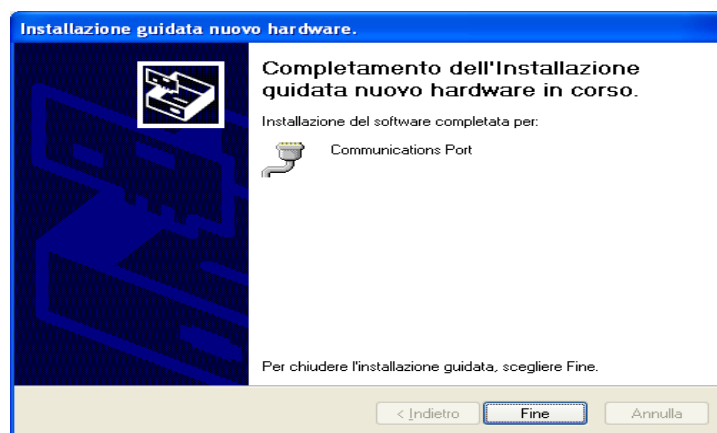
- Click **CONTINUA**:



- Wait until automatic installation is completed.



- At the end of installation click **FINE**.

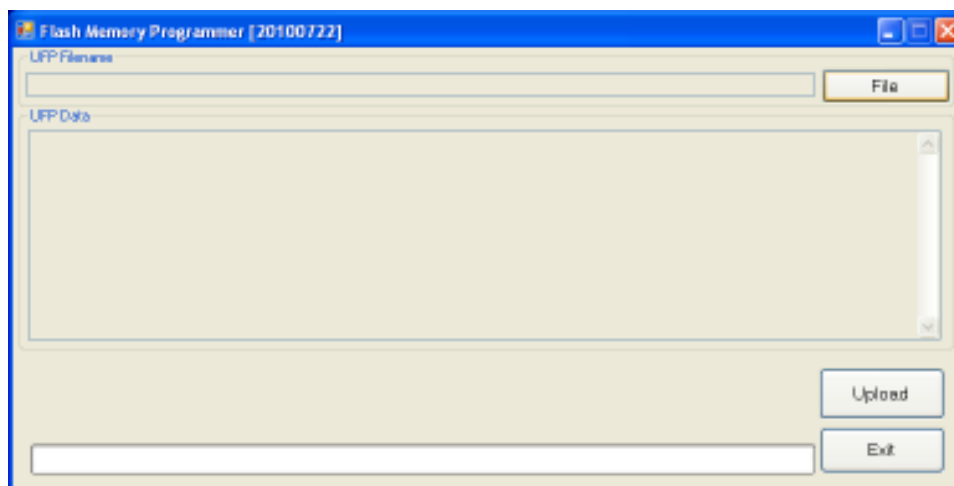


5.2 TX4 TECH UPGRADE

Once you have connected TX4-TECH to PC, select “Aggiorna TPH Cloner” from LS7 software.



The following window will appears:

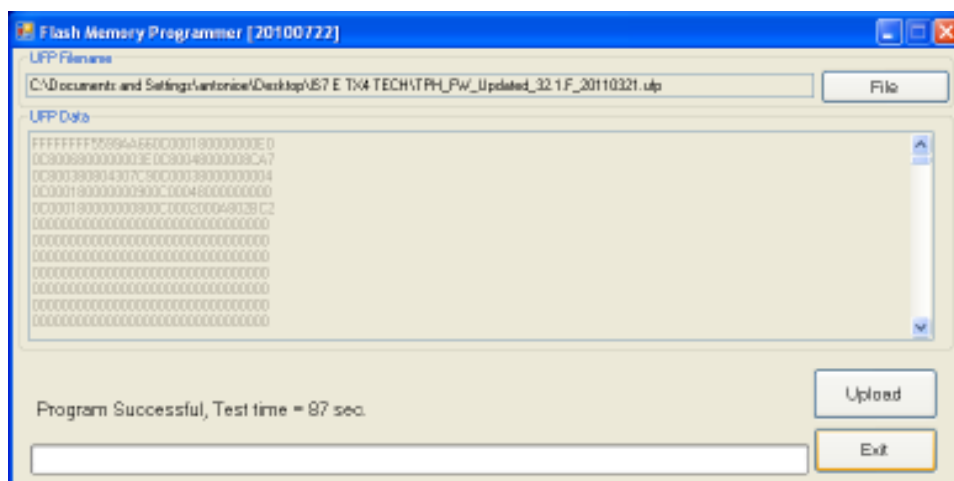


Click FILE and select the file

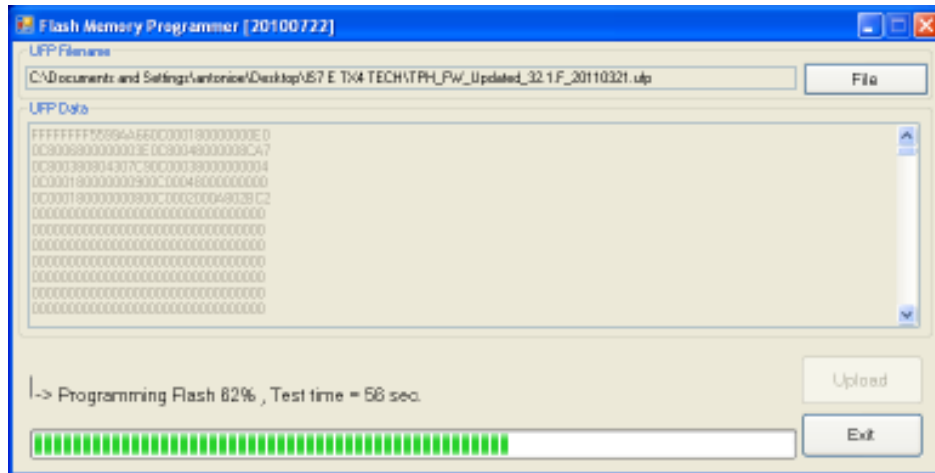
TPH_FW_Updated_32.1.F_20110321.ufp

previously downloaded in

your PC



Click UPLOAD and wait until the bar reaches 100%.



Once updated the TX4-TECH following message will appears:



**ONCE ALL UPGRADING OPERATIONS ARE ENDED PLEASE VERIFY ALL HAS BEEN CORRECTLY DONE
CONNECT ALL DEVICES, VERIFY THAT LED ARE GREEN, SWITCH OFF AND THEN SWITCH ON LS7 AND CHECK MESSAGES THAT WILL APPEAR ON LS7 DISPLAY. IF ALL IS CORRECT THE FOLLOWING MESSAGES WILL SPEAR**

VERSIONE: 3.08

HW REW 1.....

TPX-CLONNER FOUND

TPH-CLONNER FOUND

VERSIONE: 32.1.F

APPENDIX 1

it is necessary to take action on the LS7 machine hardware and replace the R22 resistor. It is a simple operation for somebody with a certain experience in this field.

ERREBI will supply you with the resistors together with the labels to seal the machines once the resistor has been replaced.

This procedure and user guides can be downloaded from: www.errebispa.com eng version

- *Products*
- *Software*
- *LS7 Firmware update*

The LS7 that will be delivered from now on are already updated from Errebi so you don't need to follow the a.m. procedure